

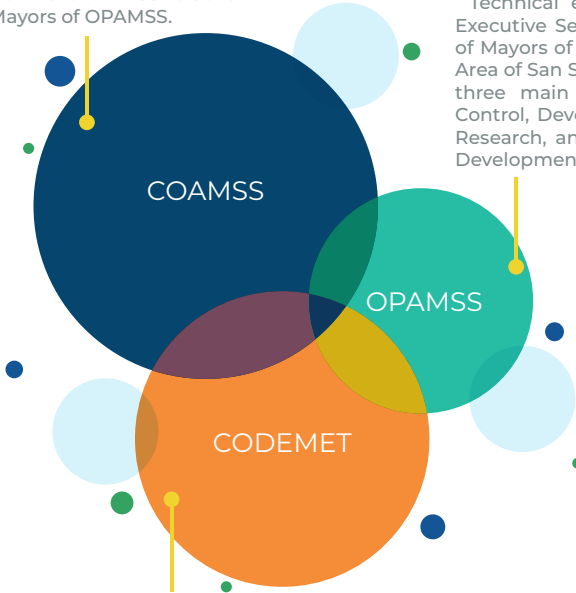
Metropolitan Area of San Salvador |



Institutional framework

Collegiate decision-making entity who regulates, coordinates and determines the policies, programs who promote the integral development of the territory and the population of the AMSS. It is the Board of Mayors of OPAMSS.

Technical entity that acts as the Executive Secretariat of the Council of Mayors of the AMSS: Metropolitan Area of San Salvador. It is made up of three main areas of work: Urban Control, Development Planning and Research, and Social and Economic Development.



Organization in charge of coordinate, agreement and management of development, agreement and management of Development and Territorial Planning for reciprocal collaboration between the municipalities of the AMSS and the Central Government.

1987



COAMSS is created as a decentralized and autonomous entity in response to the 1986 earthquake.

1988



OPAMSS was created as a technical advisory and technical advisory and implementation organization for the supervision and control of land development.

1993



The Law for Development and Territorial Ordering of the AMSS and the Surrounding Municipalities is created.

1995



The regulation for the Law of Urban Development and Territorial Ordering of the AMSS are approved

2015



Facility of the CODEMET

Metropolitan Area of San Salvador (AMSS)

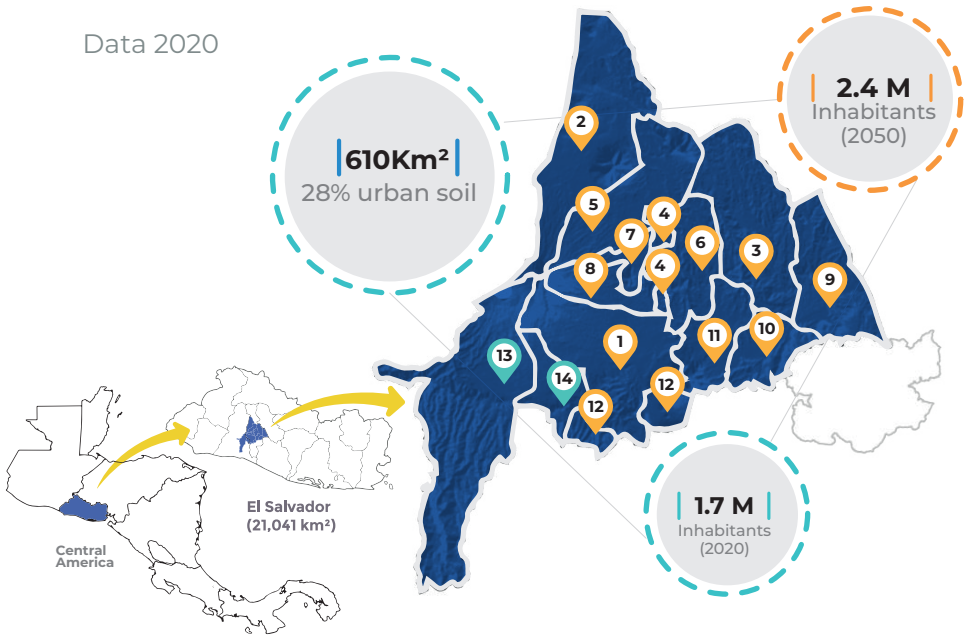
As a pioneering commonwealth, COAMSS/OPAMSS focuses its work on the planning and control of the territory of the 14 municipalities that make up the Metropolitan Area of San Salvador (AMSS) as the main political, economic and social engine of the country.

- 1 San Salvador 2 Nejapa 3 Tonacatepeque 4 Cuscatancingo 5 Apopa 6 Delgado
 7 Ayutuxtepeque 8 Mejicanos 9 San Martín 10 Ilopango 11 Soyapango 12 San Marcos
 13 Santa Tecla 14 Antiguo Cuscatlán

○ Municipalities in the department of San Salvador (12)

○ Municipalities in the department of La Libertad (2)

Data 2020



33%

Of National GDP

513mil

Vehicles.
Projection to grow 3
times by 2030

40%

Of the country's
establishments

19.75

homicides
per 100,00 people

21.7%

Population living in
poverty

45.6%

Population living in
informal settlements

**metro
polis**

world association
of the major
metropolises

The Metropolitan Area of San Salvador has the honor of being part of the World Association of Major Metropolises.

Institutional Strategic Plan



General Strategy

Improve in the metropolitan challenges related to the sustainable territory management

Vision

Recognized metropolitan institutionality in matters of planning and collaborative land management of the sustainable development of the AMSS and its surroundings, as well as in matters of management and control of metropolitan dynamics

Mission

Promote the resilience and sustainability of the metropolitan space, mobilizing a collaborative multilevel governance for the benefit of the general interest at all scales

Strategic Goal

Facilitate consideration of multiple trends, crises, mutations and opportunities to lead AMSS to desired transitions of sustainability, durability and fair resilience for all



Strategic Area I

Management of knowledge, observation and monitoring of the mutations and transformations



Strategic Area II

Institutional repositioning management



Agenda 1

Viable, collaborative and participatory AMSS



Financial viability and innovation in collaborative alliances, participatory planning

Agenda 2

Creative, productive and responsible AMSS

Employability, education, training, new economies and new processes



Agenda 3

Protective, supportive and inclusive AMSS



Active inclusion, shared development, socio-spatial justice and law

Agenda 4

Resilient and equitable Urban-Rural AMSS

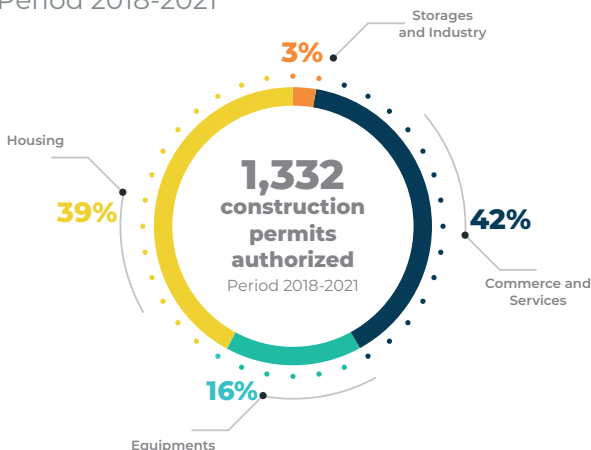
Urban/rural value development, resilience for all, accessible and robust ecosystems



Urban Development Control

The COAMSS/OPAMSS is responsible for giving legal effect to the necessary procedures to define the land use, road guidelines, retirement zones and obtain the approval of the municipality to carry out projects through the process of road review, zoning, parcelling or construction permits; as well as reception of works for any project carried out in the AMSS that meets the requirements established in the planning instruments defined by the Law on Urban Development and Territorial Ordering of the AMSS the Municipalities surrounding.

Period 2018-2021



Since the entry into force of the Land Use Map "Esquema Director", it has an average annual investment of \$259 million USD



3 Public Space

projects implemented with the Metropolitan Investment Fund - FMI

+ one
in process of conceptualization



¿What is the FMI?

The Metropolitan Investment Fund is an initiative promoted by the COAMSS/OPAMSS, where it is committed to consolidate the principles of subsidiarity, collaboration, reciprocity and support from the municipalities with the GREATER urban development towards those municipalities with LESS private investment and limited financial resources, with which the institutionality and metropolitan vision is strengthened.

Planning and research

AMSS land use map call Esquema Director

Corridor Revitalization



Urban transect



Sustainable mobility

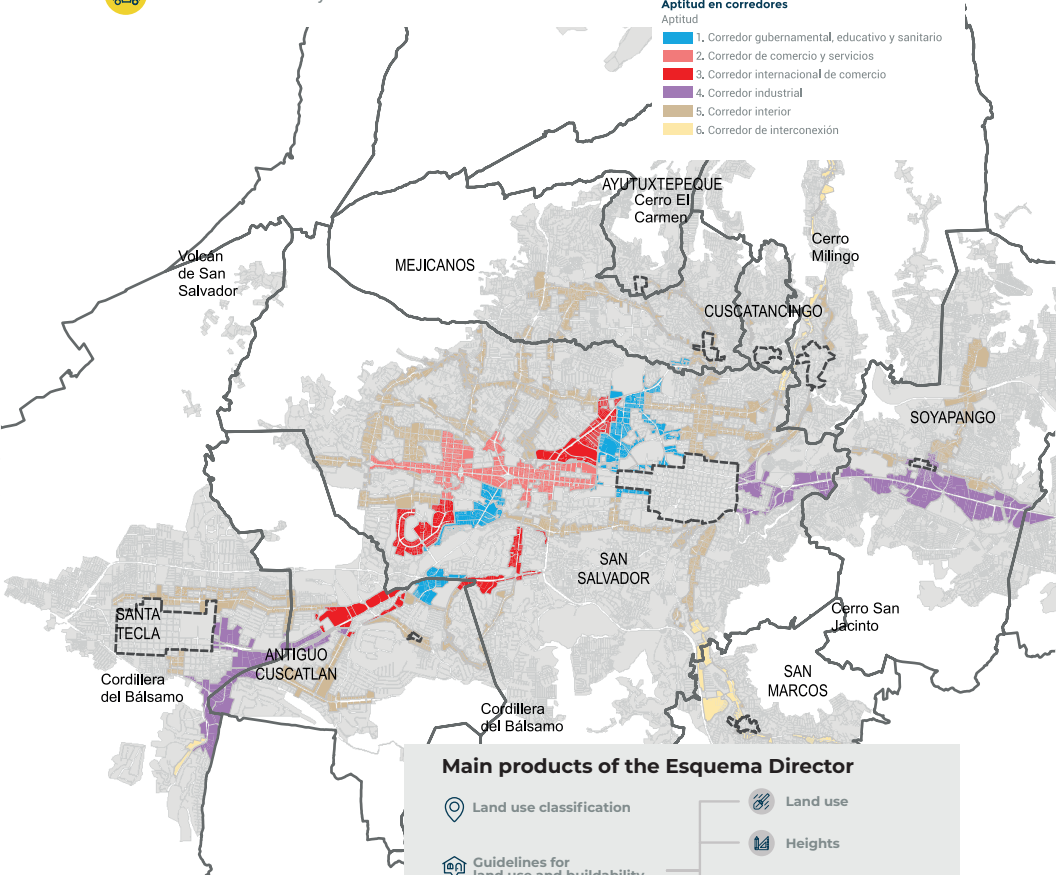


- Límites municipales
- Zona de valor histórico

Aptitud en corredores

Aptitud

- 1. Corredor gubernamental, educativo y sanitario
- 2. Corredor de comercio y servicios
- 3. Corredor internacional de comercio
- 4. Corredor industrial
- 5. Corredor interior
- 6. Corredor de interconexión



Main products of the Esquema Director

- Land use classification Land use
- Guidelines for land use and buildability Heights
- Classifications of urbanistic treatments Imperbealization
- Buildability

The Esquema Director proposes and promotes the growth and development of the municipalities that make up the AMSS, through land territorial planning that is adapted to the dimension of climate change, public-private investments and the main public policies.

Among the main products of the AMSS Esquema Director are: Use classification plan of land, General plan of urban treatments, the urban regulations of buildability and use of ground.

Social and Economic Development

Metropolitan Information System

It is responsible for converting the available information into a strategic and support resource for the decision-making of the Council of Mayors and the Planning Office of the Metropolitan Area of San Salvador, COAMSS/OPAMSS.



About the Metropolitan Observatory

It was born by agreement of the COAMSS on October 19, 2009, with emphasis on the monitoring of criminal acts registered in the AMSS for the prevention of violence. This arises through the technical support of the Spanish Agency for International Cooperation for Development (AECID).

Subsequently, with the support of AACID CABEL, UNDP, the Bucaramanga Observatory and UN HABITAT, the transition to an urban observatory was promoted.

Current stage
We monitor
more of

180
indicators

Projects in execution with our strategic allies



Risk Management and Reduction of Social Vulnerability in the AMSS, Phase II.



Support for the Implementation of the Metropolitan Urban Security Policy.



Promotion of Territorial Economic Development in the AMSS.



Implementation of the integrated waste management strategy for the Metropolitan Area of San Salvador. Phase II.



Strengthening sustainable Urban Mobility in the AMSS through equity, security, social inclusion and a gender and diversity approach



Influencing hydrological cycle management with a focus on groundwater for adaptation to climate change in AMSS.



Strengthening of Capacities for the Evaluation and Seismic Reinforcement of Buildings in the Metropolitan Area of San Salvador (HOKYO) - JICA



Strengthening of local and metropolitan capacities through the comprehensive management of public space in the AMSS



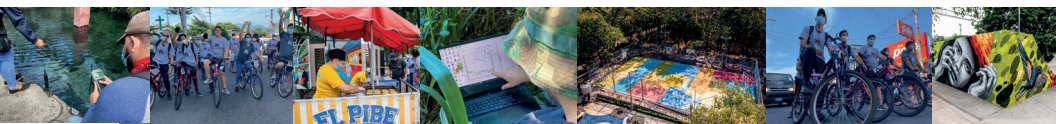
Development of a Real Estate Information Geoportol to attract investment in the Historic Center of San Salvador - USAID



Governance of the Metropolitan Area of San Salvador for the Adoption and Implementation of the Sustainable Development Goals



Planning Perspective for the reduction of Geological Risks



Metropolitan Area of San Salvador |

+ INCLUSIVE,
+ SAFE,
+ RESILIENT
+ AND SUSTAINABLE



opamss.org.sv



[@COAMSS_OPAMSS](https://twitter.com/COAMSS_OPAMSS)



[COAMSS-OPAMSS](https://www.facebook.com/COAMSS-OPAMSS)



[coamssopamss](https://www.youtube.com/channel/UCoamssopamss)



[coamssopamss](https://www.instagram.com/coamssopamss)



COAMSS
OPAMSS